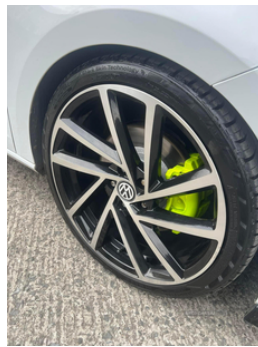


Seat Leon 2.0 TDI 184 FR Technology 5dr | May 2017

£8,995 O.N.O



2017 Seat Leon Technology
2.0 TDI 184
6speed Manual
Mot - August 2025
118,000 Miles
Service history
2 keys
Hpi clear
Ice cold air con

Bluetooth connectivity
Apple car play
Multifunction steering wheel
Sat nav
Touch screen
DAB radio
Privacy glass rear

Lowered on Eibach springs
19inch Spielbergs

Stage 1 remap 220hp
Front splitter
Rear bumper corners
Bootlid spoiler
Wind deflectors

Just had gates timing belt and water pump

Smoked taillights
Wrapped roof rails gloss black

Caliper and hub restoration

Fuel Type:	Diesel
Transmission:	Manual
Colour:	White
Engine Size:	1968
CO2 Emission:	121
Tax Band:	Petrol/Diesel (£190 p/a)
Body Style:	Estate
Insurance group:	24E
Reg:	GGZ2145

Technical Specs

DIMENSIONS	
Length:	4548mm
Width:	1816mm
Height:	1439mm
Seats:	5
Luggage Capacity (Seats Up):	587L
Gross Weight:	1970KG
Max. Loading Weight:	630KG
PERFORMANCE & ECONOMY	
Fuel Consum. (Urban Cold):	52.3MPG
Fuel Consum. (Extra Urban):	67.3MPG
Fuel Consum. (Combined):	61.4MPG
Fuel Tank Capacity:	50L
Number Of Gears:	6 SPEED
Top Speed:	142MPH
Acceleration 0-100 km/h:	7.8s
Engine Power BHP:	181BHP

Hubs painted silver

Calipers are Porsche Acid Green

WhatsApp walkaround available on request

07398850621

Finance available subject to status

£8,995

Vehicle Features

'Lights On' warning buzzer, 2 folding remote keys with window open/close function, 2 USB ports, 2 X SD card slot, 3 height adjustable rear headrests, 3 point rear seatbelts x3, 8" touch screen, 12v power point in centre console, 60/40 split folding rear seat, ABS + traction control, Active head restraints, Additional heating and ventilation outlet in rear of centre console, Aluminium front door sills, Ambient lighting, Auxiliary input socket, Black grille with chrome surround, Bluetooth audio streaming, Bluetooth Handsfree Phone Connection, Body colour door handles, Body coloured bumpers, Body coloured door mirrors, Boot net, Child proof door locks, Chrome interior trim, Chrome loading sill, Collision mitigation braking system, Curtain airbags, DAB Digital radio, Dark tinted rear windows, Driver/Front Passenger airbags, Driver/passenger sunvisors with illuminated vanity mirrors, Driver seat lumbar adjustment, Drivers knee airbag, Dual zone climate control, Dust/pollen filter, Electric adjustable/heated/folding door mirrors, Electric front/rear windows with one touch/anti pinch, Electric headlamp adjustment, Electronic parking brake with auto hold, Engine immobiliser, ESP+EBA, Front/rear floor mats, Front adjustable head restraints, Front armrest with storage box, Front assist including city emergency braking, Front cupholders x 2, Front map reading lights, Front seatback pockets, Front seatbelt pretensioners, Front Seatbelt warning, Front side airbags, Front sports seats, Full LED headlight pack - Leon, Height/reach adjust steering wheel, High gloss black finish B and C pillars, Hill hold control, Illuminated boot, Illuminated glovebox, Instrument lighting with brightness control, Leather handbrake, LED indicators in door mirrors, Locking wheel bolts, Low fuel warning light, Luggage compartment cover, Luggage tie-down hooks, Outside temperature gauge, Passenger airbag deactivation system, Passenger seat height adjuster, Passenger seat lumbar adjust, Perforated leather steering wheel with red stitching + gear knob, Radio/CD + MP3, Rear reading lights, Rear top tether child seat ISOFIX attachment, Rear wash/wipe, Rear window curtains, Remote central locking + deadlocks, Remote fuel flap release, Reverse activated kerb-view adjustment on passenger's door mirror, SEAT Drive profile, SEAT logo boot release, Service interval indicator, Steering wheel mounted audio/phone controls, Touch screen display, Trip computer, Twin exhaust pipes, Tyre pressure monitoring system, Voice control system, Volumetric alarm with back up horn, XDS electronic differential lock

